

DEMA MODELS 606T

INSTALLATION INSTRUCTIONS

I. PARTS:

- A. Select-O-Spray Assembly
- B. 2 Pcs. Foot Strainers & 1/4" ID Tubing
- C. 4 Pcs. Mounting Screws & Anchors
- D. 1 Pc. 100-15K Metering Tip Kit

TABLE 1

Hose I.D.	3/8"	1/2"	5/8"
Max. Length	15 ft.	50 ft.	100 ft.

II. INSTALLATION:

This product is designed only to be used as described in this instruction sheet. Adhere to all warnings and cautions identified in this document.



WARNING: Installations must conform to all local and national plumbing codes and use approved backflow prevention and pressure relief devices where required.

ALWAYS DISCONNECT DISPENSER FROM WATER SOURCE WHEN DISPENSER IS NOT IN USE.



Always read SDS for all chemicals used and follow personal protective guidelines.

A. Mounting and Water Supply.

Mount the unit on a vertical surface using the 4 screws provided through the mounting holes in the cover. The water inlet is equipped with a female garden hose fitting. The fitting may be removed to permit direct connection to 1/2" NPT pipe. Water supply pressure should not exceed 125 PSI. Water temperature must not exceed 160 degrees Fahrenheit.

B. Outlet Connection.

Connect the discharge hoses to the outlet garden hose fitting. Spray guns, spray nozzles or foaming wands may be used on the hose outlets, note that the Select-O-Spray is designed to operate with nozzle flow rates not less than 4 GPM total at 40 PSI. When a spray gun or nozzle is used, hose lengths must not exceed those shown in Table 1. Hoses, spray guns and foam wands are available through Dema. See the parts list on page 5, under Optional Accessories for various styles.

C. Chemical Supply.

WARNING: USE CARE WHEN HANDLING HAZARDOUS CHEMICALS.

Place the chemical container in a convenient location not more than six feet below the Select-O-Spray. (Greater lifts will reduce injection capabilities). The top of the container should not be above the Select-O-Spray. Cut the vinyl tubes to any convenient length that will allow the tubing to reach the bottom of the container. Drop the tubing ends with the strainers into the chemical containers. Push the other tubing ends over the chemical inlet barbs located on the sides of the unit.

III. FEED RATE ADJUSTMENT:

Model 606T:

The chemical feed rate is controlled by a metering tip screwed into the metering barb on the side of the unit. The feed rates can be changed by using a different size metering tip, which is available through Dema (See parts list on page 5). To select a proper size metering tip for the desired dilution ratio refer to Table 2.

IV. OPERATION:

- A. Select-O-Spray permits the operator to select one of two chemicals or clear water rinse by opening and closing the appropriate valve. Only one valve should be opened at any time. If two valves are opened simultaneously, the injector will not induct chemical. When using a spray gun or foaming wand make sure that the gun on the end of the hose is in the full open position when inducting chemical.

DEMA MODELS 606T

INSTALLATION INSTRUCTIONS

V. SERVICING:

CAUTION: TURN OFF WATER SUPPLY BEFORE SERVICING.

- A. If unit fails to draw chemical.
 - 1. Is more than one valve open?
 - 2. Is the hose too long? (See Table #1)
 - 3. Is the gun or nozzle(s) sized properly? (Refer to Section II B). Remove gun and/or nozzle(s) and turn on water. If the injector inducts chemical, the gun and nozzle(s) are improperly sized.
 - 4. Is the metering tip blocked? Remove tip and clear blockage.
 - 5. Is the hose kinked or otherwise obstructed?
 - 6. Is the spray gun fully open?
- B. If unit stops drawing chemical.
 - 1. Is the foot strainer clogged? Lift from drum and clean.
 - 2. Are the spray nozzle(s) partially clogged? Remove and clean.
 - 3. Is the metering tip blocked? Remove and clean.
 - 4. Is the injector check valve clogged? Unscrew the four cover screws to take the Select-O-Spray unit off the wall. Remove the three ball valve handles to separate the cover from the manifold. Remove the square, plastic metering knobs to inspect the check valve ball, spring and O-ring.

CAUTION: WHEN SERVICING UNIT BE SURE THAT REPLACEMENT PARTS HAVE BEEN INSTALLED ACCORDING TO DRAWING. BE CERTAIN CHECK VALVE PARTS ARE IN PLACE.

TABLE 2
SELECT-O-SPRAY DEMA MODEL 606T
 METERING TIP SELECTION CHART
 FLUID DILUTION RATIOS
 METERING TIPS (100-15)

Metering Tip Color	Injection Rate for Viscosities Shown					
	1 cps		75 cps		200 cps	
	Oz/Gal	Ratio	Oz/Gal	Ratio	Oz/Gal	Ratio
Tan	0.40	320-1	0.25	512-1	0.20	640-1
Orange	0.50	256-1	0.35	366-1	0.25	512-1
Turquoise	0.70	183-1	0.50	256-1	0.35	366-1
Pink	0.95	135-1	0.65	197-1	0.45	284-1
Light Blue	1.30	98-1	0.80	160-1	0.55	233-1
Brown	1.50	85-1	0.90	142-1	0.60	213-1
Red	1.90	67-1	1.00	128-1	0.70	183-1
White	2.20	58-1	1.30	98-1	0.80	160-1
Green	2.60	49-1	1.50	85-1	0.90	142-1
Blue	3.20	40-1	1.75	73-1	1.00	128-1
Yellow	4.85	26-1	2.25	57-1	1.10	116-1
Black	6.50	20-1	2.40	53-1	1.15	111-1
Purple	9.20	14-1	2.70	47-1	1.20	107-1
Gray	10.40	12-1	2.85	45-1	1.25	102-1
No Tip	12.80	10-1	3.50	37-1	1.55	83-1

All injection ratios are based on 40 PSI inlet water pressure and a water flow rate of 2.8 GPM.

DEMA MODELS 606T

INSTALLATION INSTRUCTIONS

RETURNS:

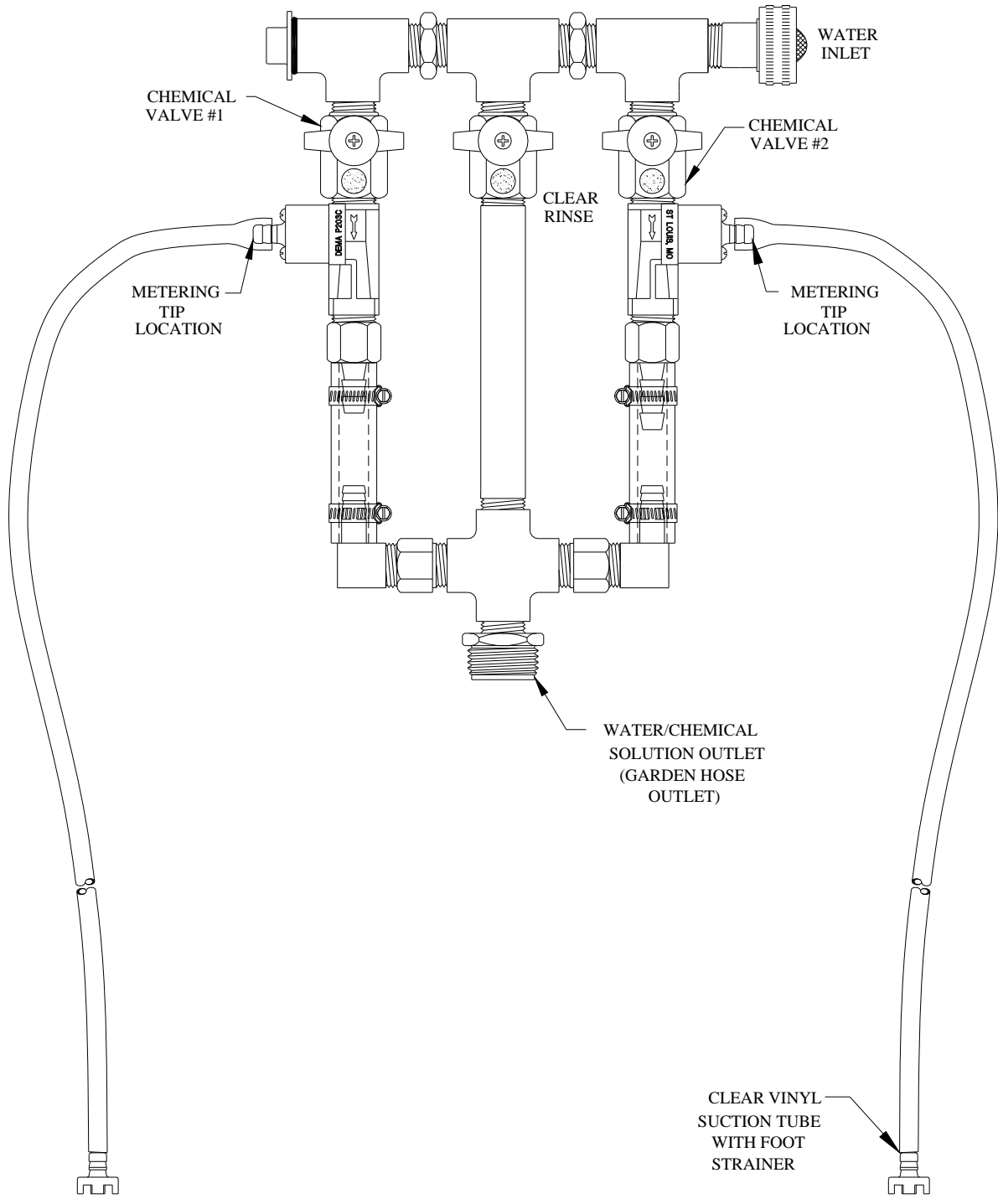
NO MERCHANDISE MAY BE RETURNED FOR CREDIT WITHOUT DEMA'S WRITTEN PERMISSION. RETURN MERCHANDISE AUTHORIZATION NUMBER REQUIRED IN ADVANCE OF RETURN.

WARRANTY:

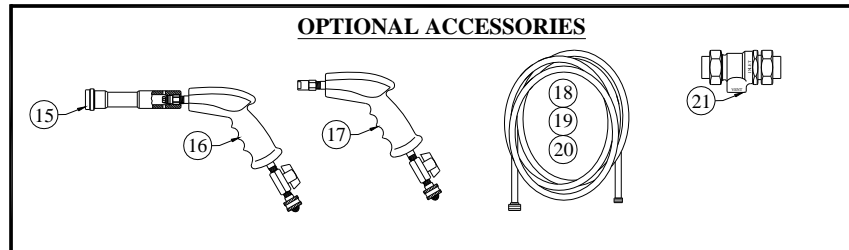
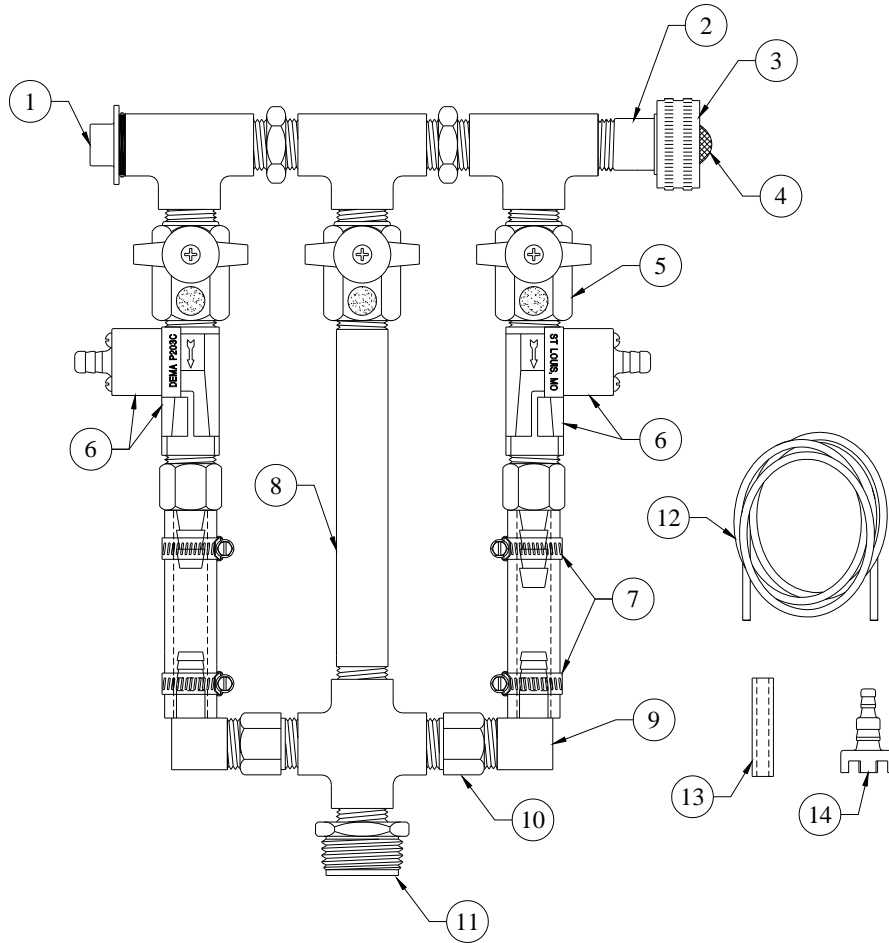
DEMA products are warranted against defective material and workmanship under normal use and service for one year from the date of manufacture. This limited warranty does not apply to any products which have a normal life shorter than one year or failure and damage caused by chemicals, corrosion, improper voltage supply, physical abuse, or misapplication. Rubber and synthetic rubber parts such as "O"-rings, diaphragms, squeeze tubing and gaskets are considered expendable and are not covered under warranty. This warranty is extended only to the original buyer of DEMA products. If products are altered or repaired without prior approval of DEMA, this warranty will be void.

Defective units or parts should be returned to the factory with transportation prepaid. If inspection shows them to be defective, they will be repaired or replaced without charge, F.O.B. factory. DEMA assumes no liability for damages. Return merchandise authorization number, to return units for repair or replacement, must be granted in advance of return.

DEMA MODELS 606T INSTALLATION INSTRUCTIONS



DEMA MODELS 606T INSTALLATION INSTRUCTIONS

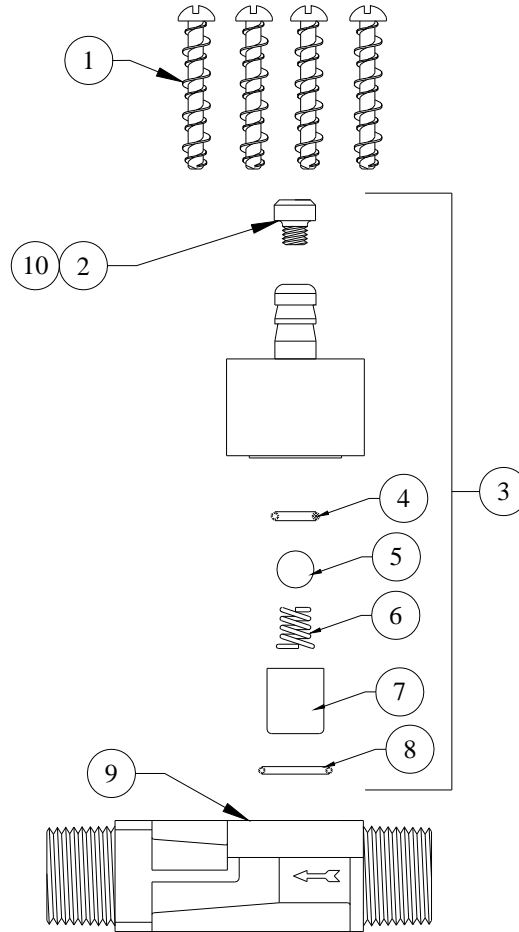


NO.	PART NO.	DESCRIPTION
1	66-153	Pipe Plug w/O-Ring
2	65-100-1	Inlet Adapter Stem
3	65-10	Swivel Coupling
4	100-38	Strainer Washer
5	65-2 81-19-20	Ball Valve Screw for Ball Valve Turn Knob
6	P203CTC	Injector (exploded view shown on separate page)
7	76-2-3	Worm Screw Clamp
8	99-5-11	3/8 NPT Pipe x 5 1/5" Lg.
9	66-99-9	Elbow Hose Barb
10	63-47	3/8 NPT Inlet Adapter
11	65-18-1	3/8 NPT Outlet Adapter

NO.	PART NO.	DESCRIPTION
12	100-12	Vinyl Tubing 1/4" I.D. x 8' LG
13	61-107-2	Ceramic Weight
14	24-11MP	Foot Strainer
15	292QD	Foam Wand w/Quick Disconnect
16	40-14QD	Heavy Duty Spray Gun w/Quick Disconnect
17	40-14HD	Heavy Duty Spray Gun
18	44-3	Hose (Black) 25' x 1/2" I.D.
19	44-3RG	Hose (Red) Spring Guard 25' x 1/2" I.D.
20	44-3W	Hose (White) 25' x 1/2" I.D.
21	44-89	Backflow Preventer (A.S.S.E. 1012)

DEMA MODELS 606T INSTALLATION INSTRUCTIONS

P203CTC INJECTOR BREAKDOWN



NO.	PART NO.	DESCRIPTION
1	24-67	Screw (4 Req'd.)
2	100-15-	Metering Tip (Specify Color)
3	24-62-SP	Check Valve Repair Kit
4	24-25S	O-Ring
5	24-24P	Check Valve Ball
6	24-23-2	Check Valve Spring
7	24-34-7	Check Valve Core
8	25-29S	O-Ring
9	24-68	Injector Body (P203C Series)

NO.	PART NO.	DESCRIPTION
10	100-15K	Metering Tip Kit